

Welcome



to Whitbourne

Welcome to Whitbourne

We hope you will settle quickly and be very happy here. Do get back to the person who delivered this if you want further information.

Whitbourne has a strong community spirit and plenty of opportunities to get involved, while being small enough for you to make a real difference.

And yes, **Whitbourne really is in Herefordshire**, even though the post says 'Worcester'. The county boundary crosses the A44 just east of its junction with the Linley Green/Gaines road.

All this information, and more, is also available on the Whitbourne Community Hub: www.whitbournecommunity.org, and the Parish Magazine will be delivered, free, to your house every month.

There is a map on the centre page spread

Village Community Shop

Open: 10 – 4 on weekdays, 10 – 3 on Saturdays, 10 – 12.30 Sundays.

We stock essentials, local produce, bread, milk, meat & cheese, frozen foods, ice cream, newspapers to order, stamps.....

We started when the old village shop shut in 2007, and are entirely volunteer-run. We moved into our purpose-built premises in 2013. We are always on the lookout for more volunteers: with a few more, we might be able to go back to our original opening hours of 9.00 'til 17.30. If you enjoy meeting people you can work behind the till; if you aren't so keen on people, you can do some "back-office" work: placing orders, sorting out invoices or receiving deliveries.

Contact: Chairman, Alec Heywood, 07790 001709,

alecheywood@yahoo.co.uk, or

Volunteer trainer, Maureen King, 07375 856797, reannag13@gmail.com.

<https://whitbournevillageshop.co.uk/>

<https://www.facebook.com/WhitbourneVillageShop>

Post

Letter boxes:

There are four letter boxes in the parish:

- The main one is cunningly hidden in a private garden: 'High Winds', opposite the entrance to the 'Acreage' estate. It really is a public letter box – the bungalow used to be a post office.
- A small one in the wall of the Old Rectory – go down Church Bank and just a little to the left at the bottom
- One at the foot of the Gaines/Linley Green road
- One on Bringsty Common where a large track leads off to the left, shortly before the shop/café

Post Offices:

- The Mobile Post Office comes on Monday afternoons and parks in the pub car park from 3.00 – 4.00 pm. Just before that it is on Bringsty Common, at the top of the track down to the 'Live'.
- There is a full time post office in Bromyard, by the zebra crossing, and a part time one in the Clifton-upon-Teme village stores (Tuesdays 9.00 – 12.00, and Wednesdays 1.00 – 4.00 pm.)

Dustbins

The black bin and the green bin are emptied on alternate weeks.

- Green bin: clean dry recycling – paper, bottle, tins, most plastic, cartons, but not Aluminium foil
- Black bin: everything else – black plastic, soft plastic, food waste, contaminated items.

Wednesdays: Top Lane, Bottom Lane, Ashpool, from shop to Poplands, Badley Wood, Poswick.

Thursdays: Ardley Meadows, Acreage, Old Forge, Meadow Green, Gaines road.

If in doubt, contact Herefordshire Council on 01432 260000 or enter post code into: www.herefordshire.gov.uk/rubbish-recycling/check-bin-collection-day

Buses

From the bus stop by the village hall there is one weekday service into Worcester run by 'First'. The 420 departs at 7.24 am, and leaves Worcester Crowngate bus station for the return trip at 5.00pm.

On **Tuesdays there is a shopping bus** into Worcester run by 'DRM'. It leaves the Whitbourne bus shelter at 10.04, and leaves Worcester Crowngate for the return trip at 12.00 noon.

If you can get to Knightwick, the 423 runs 6 times a day into Worcester.

If you are without access to a car, **Bromyard Community Transport** may be able to help: 01885 488 452, <https://gobct.org.uk/>. They always welcome volunteer drivers.

Health

People in Whitbourne mostly enrol at either Knightwick Surgery (which is ranked 32nd in the whole of England – it's by the A44 going towards Worcester, 01886 821 279), or Nunwell Surgery in Bromyard (just below the bypass, in Pump Street, 01885 483412). Because we are on the county boundary, this choice will tend to determine whether you look to Worcester or Hereford for referrals.

There is a Community Hospital, with no A&E, in Bromyard.

There are two dentists in Bromyard.

Whitbourne Village Hall

Whitbourne Village Hall is a modern facility in the centre of the village, available for hire by individuals and organisations. It has a large hall which can comfortably seat eighty people, a smaller hall which can seat up to twenty people (and they can be hired separately or together), a kitchen and toilets. It is designed for disabled use. We have a stage with a complete lighting system. There is plenty of car parking within the hall grounds and we are next to the playing field which can be included in the hire but at an additional fee. (The playing field is operated by a separate charity – see below.)

Information and on-line booking: www.whitbournevillagehall.co.uk
Enquiries: 01886 821 350 enquiries@whitbournevillagehall.co.uk

The **Village Hall Management Committee** is a charity ensuring that the village hall remains as a facility for the community of Whitbourne in perpetuity. New committee members are welcome: meetings are held once a quarter.

Contact: Liz Kershaw 07876 548 010.

Playing Field

The field is next to the Village Hall in Whitbourne and is open 24 hours a day for all to use.

We have equipment for all ages, from baby swings to adult fitness equipment, frames and slides, and football and archery nets. And there are benches and picnic tables for you to use and watch the fun.

A band of volunteers raises money for repairs, maintenance and new equipment and the Parish Council, who own the Playing Field, pay for much of the upkeep.

Contact: Maureen Williams 01886 821189, or Tess Hunt 01886 821691

NB: No dogs allowed on the playing field.

Wednesday Coffee and Chat in the Village Hall

A monthly informal Coffee (or tea) morning to meet up with friends and neighbours, and have a chat. Also a great way of meeting people if you are new to the village. Just come along and join us on the first Wednesday of the month at 11.00 in the Village Hall.

Contact: Ann Roberts, 01886 821063, annr677@gmail.com

The Live & Let Live - Whitbourne

We are a friendly countryside pub and restaurant, with local ales, chilled lager and ciders. We welcome families, we are dog friendly, and we have beautiful views from our beer garden. Inside we have real open fires and a wood burner in our restaurant.

Open every evening from 6 pm

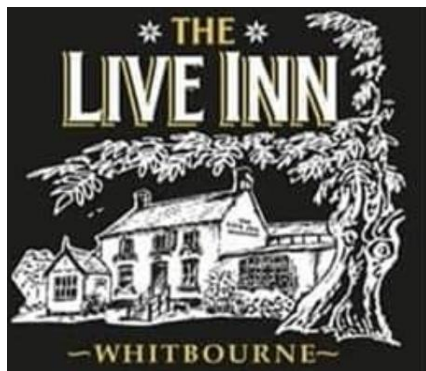
Friday, Sat & Sun open from 12.00 noon

Food served evenings & Sunday lunch (booking essential)

Quiz evenings, bingo, discos.....

Contact:, 01886 357 070.

<https://www.facebook.com/liveandletlivewhitbourne22/>



Whitbourne Parish Church

A warm welcome from St John the Baptist C. of E. church, which serves the community of Whitbourne. The beautiful church building is in Boat Lane in the oldest part of Whitbourne (go down the hill known as Church Bank. You will see the church on your right at the bottom).



It is open during daylight hours, and the Sunday service is held each week at 9.30 am and all are welcome.

Whitbourne is part of the Anglican Parish of Greater Whitbourne, which comprises six parishes: Whitbourne, Tedstone Delamere, Tedstone Wafre, Upper Sapey, Wolferlow and Edvin Loach.

Details of additional services and events are in the Parish Magazine or on www.whitbourne.org.uk: go to 'Weekly Notices' from the home page.

Contact: Revd Dawn Hyett, 01885 483747, hyettdawn@gmail.com.

Friendship Lunch

There is a monthly friendship lunch on a Wednesday at Whitbourne Village Hall: two courses, choice of menu, and tea or coffee, all for £10. All are welcome, booking is essential.

Contact: Dawn Hyett, 01885 483747, hyettdawn@gmail.com

WI

The Women's Institute aims to provide country women with friendship and support, to encourage lifelong learning and to give members a voice within their communities and the wider world.



Whitbourne WI is a small institute so we warmly welcome new members.

Meetings are held at 2.30 on 2nd Tuesday each month in Whitbourne Village Hall. They may include a speaker or demonstration; an outing or activity for all to join in; news from National and/or Worcester federation; a raffle and always time for a chat over tea and cake. There is an annual membership fee to join WI, but we are happy to extend a welcome to visitors for a 'taster session' or two without joining formally.

Contact: Ann Taylor 821744 anntaylor24@btinternet.com, or just come along to the Village Hall.

Children's Activities

Holiday club activities for 4 – 11 year olds at Olly's Friendship Room, Upper Sapey Church, WR6 6TL (July 27th & 28th 2023, more to follow). Crafts, icing, music, games, clay modelling and more!

Contact: Marion Symmons, marionsymmons@hotmail.co.uk 07483 895 656

Parish Council

Whitbourne Parish council has nine elected councillors and a clerk. Council meetings are held in the village hall at 7.30pm on the first Wednesday of January, March, May, July, September and November, with extra meetings as needed, and an Annual Meeting in May. Meetings usually cover finance, planning, ongoing projects and reports from bodies including the playing fields committee, village hall and Bringsty Common Manorial Court.

Meetings are open to the public, and the chair can 'open the meeting' to permit them to speak (e.g. on a planning application).

Contact parish clerk: whitbournepcclerk@outlook.com

Website: www.whitbourneparishcouncil.org.uk

County Councillor – Peter Stoddart

Pete is our elected ward councillor on Herefordshire Council and can be contacted for help in relation to the myriad of things that the Herefordshire Unitary Authority is responsible for, from planning to highways, school transport to social services. He lives in on Bromyard Downs in Norton Parish but the ward encompasses the area from Sapey Common in the north down to Linley Green in the south and the county boundary on the east to significant parts of Bromyard in the west.



Many answers to common questions can be found on the Herefordshire Council website, <https://www.herefordshire.gov.uk/>

Contact: peter.stoddart@herefordshire.gov.uk 07529 188727.

Whitbourne Community Allotment Group

We have 11 plots of varying sizes on fertile south-facing clay soil, beyond the Village Shop.

New allotment holders are always welcome: membership is £5 p.a. plus an additional plot rental charge per square metre.

We are a small, friendly group, ranging from complete beginners to seasoned experts, so help and advice is always available at no extra charge!



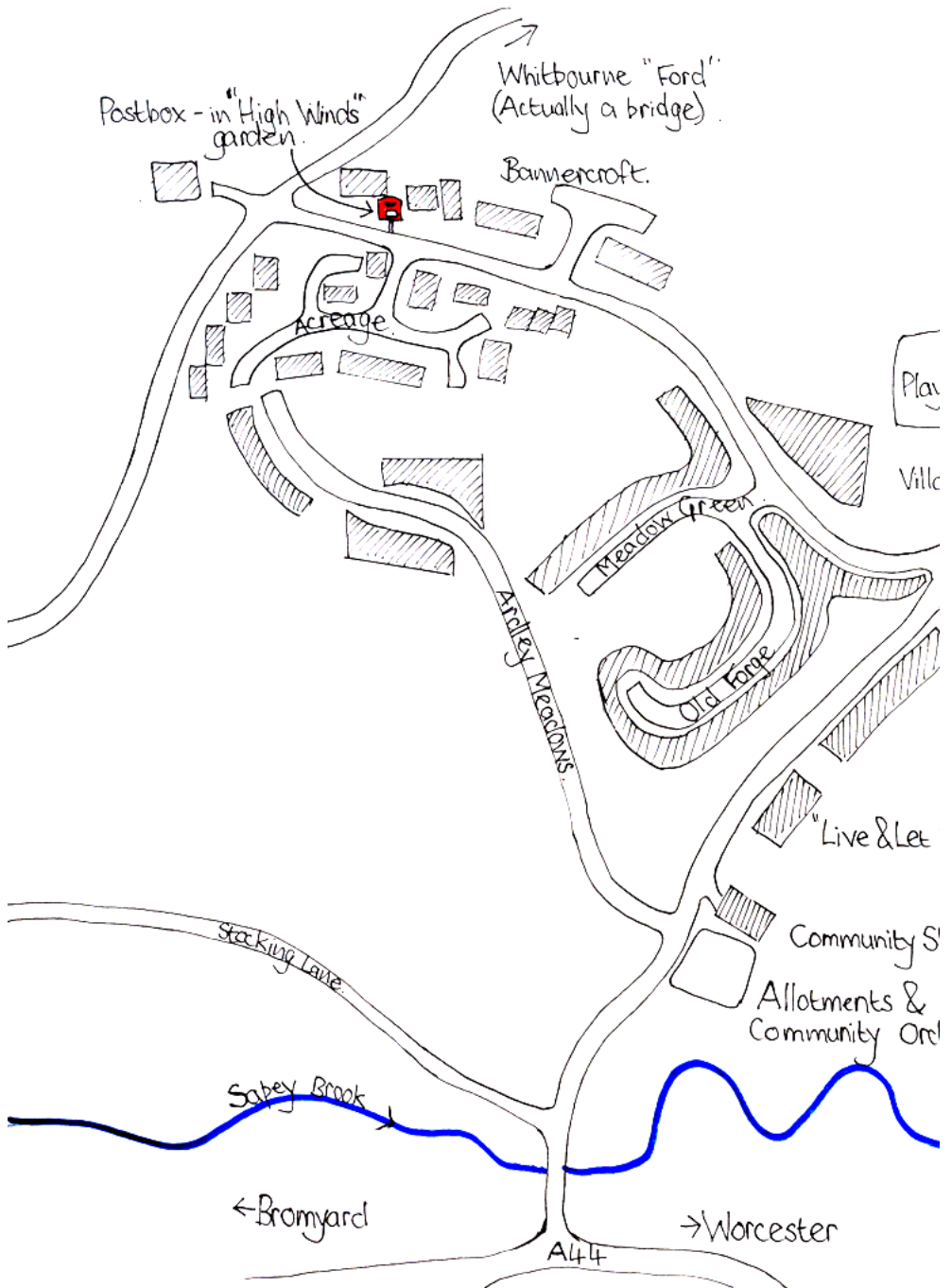
Contact: Lisa Devlin lisadevlin58@btinternet.com

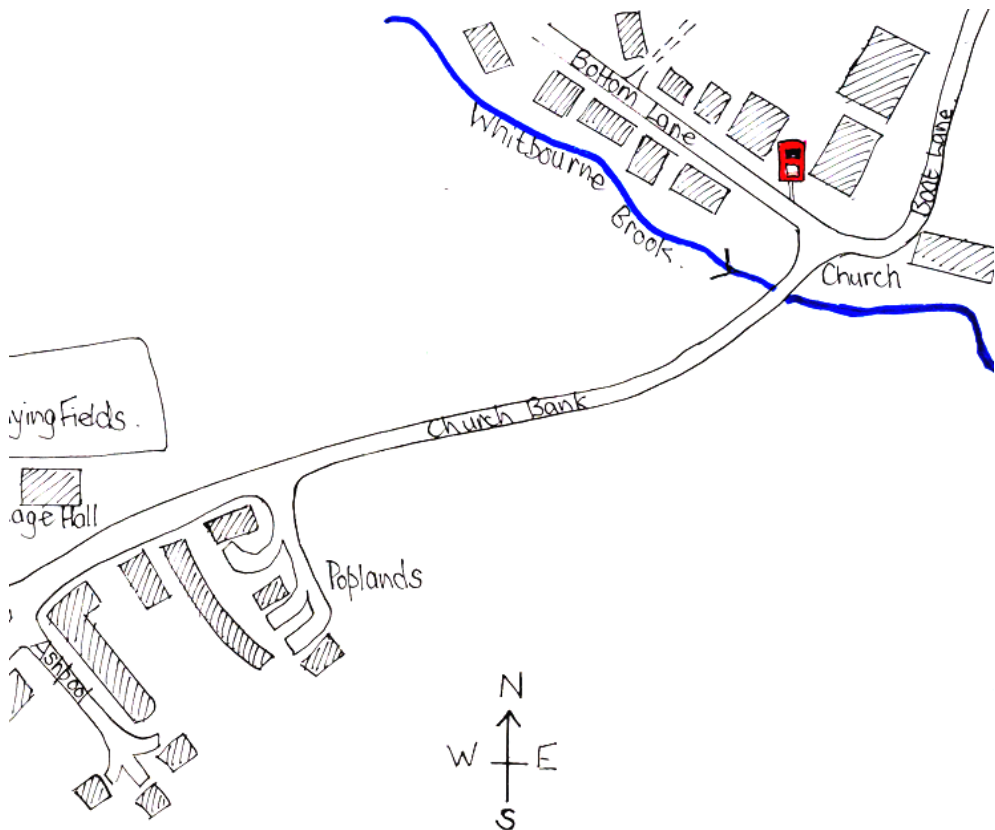
Community Orchard

The Community Orchard lies in a surprisingly quiet corner, beyond the allotments behind the Village Shop. There is a mixture of eating, cider, and cooking apples. We will also be planting a pear, hazel and quince in the 22/23 season.

The fruit can be picked by anyone for their own use, and/or pressed for juice at the Annual Community Apple Pressing at the Village Shop. For the best taste, check the fruit is completely ripe by gently twisting the apple half way round. If it's ready it will fall into your hand.

There are a few chairs and tables for sitting out, eating a picnic, drawing, painting or just watching the insects and flowers. Come on down and enjoy this little orchard and its wildlife.

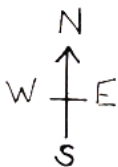




Living Fields.

Age Hall

Poplands



Live " Pub

Shop

chard.

Around Whitbourne.

Scale appx 1:30

Litter Action Whitbourne

A voluntary community group that aims to keep the village and surrounding area litter-free – as part of the Herefordshire ‘Stop The Drop’ campaign. LAW meets on the second Saturday of each month, 10am at the Village Hall. We usually finish at 11 am.

All ages welcome, get in touch beforehand or just turn up on the day. All equipment is supplied but participants are asked to wear strong shoes and bring their own gloves. Children under 16 must be accompanied by an adult.

Contact: Creek Wier, creekwier@gmail.com

Thursday Badminton Group

We are an informal group that meet up on a Thursday evening for a few games of badminton, returning to the pub for drinks. It’s a social occasion: our aim is solely to have a good time and enjoy each other’s company. If you are interested you would be welcome.

Contact: Chris Wier wiercdcs@aol.com or 07791 734349.

Whitbourne Air Rifle Club

The Air rifle club is a member of the Lord Ednam Air Rifle League (LEARL), commonly known as The Bell Target League, as the target is a metal disc with a hole in the middle (the ‘bull’). The bell rings if you get a pellet through the hole. We meet at The Talbot at Knightwick, on Mondays starting at 20:30 throughout the year. Match nights are Thursdays at various locations, including our home venue. There are ten other teams in the league. Beginners always welcome, minimum age is 14 unless accompanied by an adult and there is no need for a rifle as there is a club rifle or you can use your own if you have one as long as it meets the league standards. We’re a very welcoming group.

Contact: Kevin Phillips (Captain) kevinp10@mac.com Tel: 07866 553984

Whitbourne Table Tennis Club (W TTC)

The table tennis club meets every Monday 7pm to 9pm at Whitbourne Village Hall. We welcome all abilities (children under 14 must be accompanied by an adult). We have two tables, balls and bats are provided. We charge £3 per session (spectators are free).

Contact: Mike Hogg, mikehogguk@aol.com;
Will McMorran, williamgmcMorran@gmail.com
Chris Wier, wiercdcs@aol.com



Vayu Aerial Yoga

A yoga practice that was developed to create space mentally and physically, by opening up the body through various postures, using a custom-designed yoga hammock.

Regular classes at Whitbourne Village Hall: Tuesday evenings. 16yrs+, open to all abilities. Booking essential.

Contact: Rachel Freeman rfvayu@gmx.com 07870429528
Web: www.rfvayu.yoga Facebook rfvayuyoga

Riding for Disabled

The Longlands RDA group provides therapeutic riding sessions for children with special needs. It is based at Longlands farm, and meets on Wednesdays: 10:00 - 11.30 am during term time. Volunteers are welcome, to support the children in their riding.

Contact: Julia Evans 07800 770698 or Anne Bard 07977 275143

Church Bells

The church tower holds a ring of 6 bells, the largest of which, the Tenor, weighs in at 11 ½ cwt. The oldest bell was cast in 1717, the frame replaced in 1908 and a refurbishment project carried out in 2016. They are rung from the ground floor.

Currently the bells are largely silent as sadly there is no regular team of ringers. The bells are chimed for events such as weddings and occasionally bellringers from other local towers or visitors from further afield ring the bells in the manner they were hung for.

It would be great to get a local band established again. Bellringing is a fantastic hobby, and just about anyone can learn the skill if they put a bit of time in: any age from 10 to 80+ , any religion or none, takes no more physical strength than housework and is a lot more fun!

Contact: Ady Taylor whitb@hdgb.org



Longlands

Longlands is a charity offering alternative education and mental health support on a working farm for young people aged 12 – 19. It is based at Longlands Farm, on the western side of the village. Students, particularly those



for whom a school setting is not working, come for 1 – 3 days per week.

Volunteers have an important role assisting the staff in working with the students, as well as helping with the running of the charity. To find out more speak to Julia Evans, founder and CEO, on 01886 821728.

Website: <https://www.longlandsfarm.org.uk/>,

Facebook <https://www.facebook.com/longlandscarefarm>

Crumplebury

Crumplebury is based on Whitbourne Estate. It's a modern events venue with 11 spoiling bedrooms and a celebrated farm-to-fork, fine dining restaurant – Green Cow Kitchens. We're all about utilising estate produce and showcase the marvellous organic beef and sheep reared by Tim and Lara Roberts of the home farm.

Throughout the year we host a varied programme of events including fire pit feasts, musical performances and Christmas for the Kids.

Contact: www.crumplebury.co.uk for details of the various curated events coming up and to book a table at the restaurant.

We are always on the lookout for casual members of staff to help with waiting on, bar work and washing up. We offer great rates of pay and perks and will be pleased to give anyone in the village a "trial shift". Contact: hello@crumplebury.co.uk if you (or one of your children!) are interested.

Green Tree Adventures

Our aim is to engage children and adults in learning about woodland habitats, making crafts from the natural woodland environment and having amazing muddy, risky adventures. We are members of the Forest School Association and are first aid trained and fully insured. Birthday Parties, Holiday Clubs, Home Education hub etc.

Contact: Lara at Rosemore Farm, Whitbourne, WR6 5RZ, 07976 355 691, laras@greentreadventures.co.uk

Pilates

A small, physiotherapist-run Pilates class at Whitbourne Village Hall on Tuesday mornings. Our classes are friendly, fun and non competitive and new members are always made to feel very welcome.

Contact: Sue Bratton, 07974 343609, sue579@icloud.com

Over 55s Dancefit

A very relaxed fun Dance exercise class that is aimed at over 55s but open to all abilities and can be adapted to suit people with medical conditions. Whitbourne Village Hall, Wednesdays, 9.45 – 10.45.

Contact: Beth 07506 686834 or Laura 07807 871115

Whitbourne Hall

Whitbourne Hall is a mid-Victorian, Grade 2* listed mansion about a mile and a half outside the village towards Tedstone Delamere (and visible from the A44).

It was built by Mr Edward Bickerton Evans in 1860. He made his money out of vinegar, would you believe, and part owned the Hill Evans Vinegar Works in Lowesmoor, Worcester, where Asda now stands. The Hall stayed in the family until 1980 when a quite dilapidated, leaky building was bought by a small group of people who started converting some of the rooms into flats. The project grew and there are now 23 apartments of different sizes varying from a one-bedroom apartment to a 5-bedroom, 3-storey house.

The house and gardens are not normally open to the public, but there are occasional events, and the main rooms on the ground floor have been left unaltered and can be hired for weddings or private functions.

Contact: www.whitbournehall.co.uk

Bringsty Common

If you love open spaces Bringsty Common is made for you. It is 250 acres of common land in Whitbourne and Linton. That means you can walk or ride a horse anywhere on the common. Bringsty has lots of grassland, bracken, streams and woodland. It is home to ravens, red kites, hundreds of different moths and butterflies, including the scarlet tiger moth and some magnificent oak trees. It also has a great pub, the Live and Let Live, a thriving café and antique shop.

Bringsty is a great place for dog walkers but please remember:

- Keep your dog under close control
- Remove dog poo from tracks
- Park only in the official car parks at the top of the track to the Live and let Live and next to Brockhampton woods
- Do not light fires (we have had several wildfires recently)
- No overnight parking

Bringsty Common is owned by Herefordshire Council but is managed by a Committee of local people, the Bringsty Common Manorial Court.

Contact: clerk@bringstycommon.org.uk
<https://bringstycommon.org.uk/bcmc/>

Local History

The Bromyard and District Local History Society is an active local history group with a centre next to the Post Office in Bromyard. We run a series of Wednesday evening lectures during the autumn and spring, plus day outings and longer courses, covering all aspects of history relevant to the local area. We have published books on many local villages and topics, including the excellent 'Whitbourne: A Bishop's Manor'.

The research room and extensive archives include a mass of historic photos from the area, historical maps and details of many of the older houses. There are also opportunities for volunteering: manning the centre, undertaking research, digitising the archive etc

The centre is open on Thursdays, Fridays, and Saturday mornings. Contact: 01885 488 755. <https://bromyardhistorysociety.org.uk/>

Bromyard

For a small town, Bromyard is remarkably well served. The main shopping street is in two parts – the first half is Broad Street, the second half High Street. Street parking in the centre is restricted to one hour, but there are two pay and display car parks: one on the Tenbury Road, and the other rather well hidden behind the Heritage Centre in Church Lane.

Shops

- The big supermarket, a Co-op, is on the Tenbury Road (B4214).
- Post Office: in Church Street, by the zebra crossing
- We have two family butchers, two bakers, an ironmonger, a greengrocer (who also sells ironmongery and equine supplies), a pharmacy, two smaller supermarkets, one in the High Street and one at the petrol station, and a wide range of small businesses.

Food

There are 3 Chinese takeaways, 2 Indian restaurant/takeaways and a good supply of cafes and pubs.

Conquest Theatre, by the Co-op on the Tenbury Road, is a 155 seat community theatre. It hosts its own amateur company, touring productions, live music, films, and live relays from Stratford, Royal Opera etc. There is an active youth theatre group, and a Saturday coffee morning. <https://conquest-theatre.co.uk/> 01885 488 575

Bromyard Community Arts promotes and organises arts events and activities for the benefit of the local community in Bromyard and the surrounding area and to create opportunities for participation, engagement and education. There is also a pop-up art gallery in the old chapel in Sherford Street. <https://www.bromyardcommunityarts.co.uk/>

Bromyard's Churches: Anglican St Peter's, in Church Street; Methodist Church in New Road; and Roman Catholic St Joseph's on Old Road.

Sport

There is a rugby club, cricket club, football club, archery club and bowling green. Most have youth sections. The Bromyard Centre (facing you at the far end of the High Street) houses the Halo gym and leisure centre, and a tiny library.

Festivals

Bromyard hosts an extraordinary number of festivals, from the nationally important Folk Festival every September, to the Town Criers slightly eccentric annual get-together.

Vets

There is both a small animal practice and an agricultural/equine vet in Bromyard. Also a mobile vet based in Broadwas, who comes to you.

For more information

Adverts for local trades-people & suppliers, local news and announcements can be found in the monthly ...

Parish Magazine, which you will receive free of charge 11 times a year, delivered to your home by a volunteer. It is published by the church for the whole community in Whitbourne and several other nearby villages. To write, volunteer or advertise,

Contact: parish.magazine@yahoo.co.uk

All of the information in this leaflet, and updates, can be found on the **Whitbourne Community Hub**: www.whitbournecommunity.org

Bromyard Info is a monthly printed newsletter, available at Whitbourne Village Shop, and also an active **Facebook Group** for local news and views at <https://en-gb.facebook.com/groups/bromyard.info/>

o o o 0 0 0 o o o

This leaflet has been delivered on behalf of the Parish Council by:

..... Tel:

Feel free to contact me if you have any questions
Feedback, additions and corrections are also always welcome